

**On Electronics
Industry and Trade Company Limited**

Company Profile

April 2017

CONTENTS

1-Introduction

2-Company Information

3-Applications

4-Contact Information

5-Quality Policy

6-Sister Companies

7-References

1-INTRODUCTION

Dear Madam/Sir,

Please kindly find the detail information about On Electronics, a company providing R&D, project planning, design, manufacturing, technical assistance, maintenance and consultancy services for electrical, electronical systems since 1991, on the following pages.

Having successfully completed many projects, manufacturing a range of products, and with 2 patents registered on its name, On Electronics, sector's largest and reputable company, has also met ISO:9001:2008 quality standards and has received registration. Quality assurance policy applied by On Electronics can be considered a mirror, reflecting what the Company aims to achieve in the future.

On Electronics duly involves in all processes throughout the design to after sales services. This approach enables the Company to preserve the integrity of all works being carried out, and maintain the responsibilities thereof at one hand thereby increase efficiency.

Instead of mass production, On Electronics provides tailor-made solutions to its customers, each with unique demands and necessitates. In this respect, we seek to become rather a solution partner for all our customers.

We assure you that we are committed ourselves to provide you with the best solutions as much as you do.

Sincerely,

Orhan AYDIN
Electrical&Electronic Engineer
General Manager

2-COMPANY INFORMATION

Established in 1991, On Electronics Industry and Trade Limited Company is a high technology company. Since its establishment, our Company has been solely devoted to research, development, design and manufacturing of LED display systems.

Because of its technological research and studies, On Electronics has received support from Technology Development Center, an organization jointly established by ODTÜ (Middle East Technical University) and KOSGEB (Small and Medium Industry Development Organization) in 1993 and 1998 period. Throughout 1993-1998 period, we carried out Research and Development activities at ODTÜ-KOSGEB Technology Development Center. In 1998, our Company left the Center to move its own building to let new companies benefit from Center's services. Our collaboration with the Center as well as the companies at the Center still continues.

As On Electronics, our main principle is to develop world quality products, which have the competence with all aspects to compete in international markets. To this end, our Company cooperates with those suppliers, who are experts in their line of business. Design and project implementation processes are being managed and supervised by three electrical and electronic engineers as well as one mechanical engineer employed at our Company. Our processes have met ISO 9001:2000 Quality standard and received registration.

Both the information itself and transmitting the information to the concerned people in a fast, efficient manner and in an uninterrupted way was always very important throughout the history, and it is even more important than ever. This process had begun with the pictures on the caves' walls and transformed into a technology where voice and video is transmitted whole world through satellites. On Electronics has been always very closely interested in the developments in electronics, and continues its activities in research, development and manufacturing of electronic display systems (LED information signs). Our Company has 2 patents registered with its own name for 2 unique innovations.

Since our products are being designed and manufactured solely by our Company – On Electronics-, this enables us to maintain integrity and reliability in the maintenance and technical and operational support services we provide.

Our company has been working on railway electrical and mechanical systems for two years. Specially we are working on-board installation, way-side installation, maintenance & repair services. We would like to be expert on signalization systems of railways in the future.

3-APPLICATIONS

3.1-Scoreboards

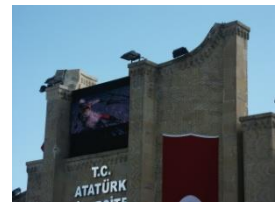
These electronic systems are for displaying such information as time clocks, score, warnings and fault, time-break, period and team names to both the players and audiences. All scoreboards we produce comply with rules of international or national associations.

- Standard and custom-made designs for all indoor sport events, such as basketball, volleyball, handball, wrestling, boxing, judo, karate, taekwondo, lifting, table tennis, and many others.
- Standard and custom-made designs for all outdoor sport events like football, tennis, athletics and others. We also have models for football courts with artificial turf.
- Standard and custom-made designs for pool sport events, such as swimming, water ball, jumping and other events.



3.2-LED board systems

These systems are typically for displaying single-color, multi-color or full color video images. Designs can range from 1m² to 200m² even bigger. Models are available for indoor, outdoor or mobile applications where portable boards are installed on top of vehicles. They are being used as large screen displays in many events like advertisement, promotion, congress, sports games. They can process the video from different sources, such as camera, TV, computer, video player etc., and incorporate the video image with hundred types of effects, if necessary for large-screen presentation.



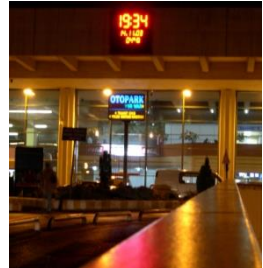
3.3-Scrolling text systems

These LED sign system are for displaying scrolling single, multi or full color message. They are typically manufactured for single-line and single color applications. Character height may vary between 5cm to 100cm in custom-designed cabinet size. They are ideal for attractive and cost-effective promotional purposes. They are programmable and easy to use.



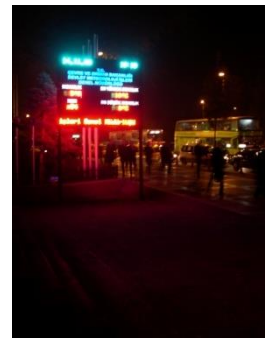
3.4-Clock and temperature displays

Different size and model options are available. The range of the available models may vary from stand-alone clock displays to integrated clock and temperature displays which display time, temperature, humidity, date etc. information interchangeably. Indoor and outdoor models are available. For such places as hospitals, bus and train terminals, airports, schools, malls, stock market transaction rooms where different time information should be displayed, Centralized Clock System displays are available (by means of which different time information is obtained from a centralized clock source). Some models also have a GPS module for obtaining clock information from satellites.



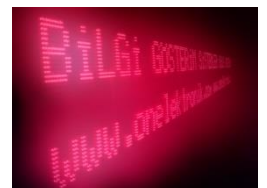
3.5- Numeric, alpha-numeric and graphical LED displays

These are general-purpose systems designed for meeting indoor and outdoor displays needs of any sector. They can be used for displaying vacancies in a car park or car park fee, exchange rate or stock market information, direction and/or line number of the public busses, name of open pharmacies on weekends, and for displaying other useful information in public places. Our company has a wide range of LED display design and products for this kind to be used for any purpose.



3.6-Industrial (factory) information collection and display systems

These are very useful especially at mass production factories where production critique information concerning production lines and machinery is needed to be collected, compiled and displayed from point which can be viewed from every where. Through this system production critique parameters such as number of the products manufactured, machinery failure status, targeted production, actualized production, number of daily, weekly, monthly and annual production, overall productivity, productivity of the production lines, efficiency of the workers and the machinery, temperature, pressure, flow, current, voltage are being collected, compiled,



and displayed on LED boards. Our products are designed and manufactured according to customer order and needs.

3.7-Intelligent Traffic Systems

- Crossroad signage and project planning services
- Traffic signaling infrastructural works
- Polycarbonate traffic signal heads 8" and 12"
- Crossroad Control Device
- LED traffic sings
- Animated and smart traffic signs
- All kinds of traffic signs
- LED Counter
- LED Variable Traffic Signs
- LED Variable Message Signs
- Portable LED Variable Message Systems
- Speed Measurement Signs and Warnings
- Dynamic Signage for Approaching Vehicles, Vehicle Counter and Categorizer
- Number Plate Detection Systems
- Special signaling and automation systems for Motorway, bridges or private through roads.



3.8-Passenger Information Display Systems

It is an automated system for collecting, compiling and displaying arrival-departure times and other travel-related information at airport, bus and train terminals. The system utilizes monitors and large LED boards to display the relevant information.



- Airport arrival-departure displays
- Airport baggage, check-in and flight gate displays
- Airport Flight Management and Control System
- Railway Station Passenger Information Displays
- Metro Lines Passenger Information Displays
- Tramway Lines Passenger Information Displays
- Bus Terminal Departure Planning and Management System
- Bus Terminal Toll Collecting System
- Bus Terminal Station Allocation and Control System
- Bus Terminal Entrance-Exit and Parking Automation
- Bus Terminal Station Displays



3.9-LED Lighting Systems

We design and produce conventional lighting fixtures for industrial application i.e. tunnel lighting, highway lighting, manufacturing plant etc. We are expert on manufacturing heavy duty stainless steel lighting fixtures. Also we have an ability to produce decorative lighting element with LED for hotels, restaurants, night clubs, bars, bridges, towers and similar public buildings, paintings, historical works of art, sculptures etc. LED fixtures have capability of giving any color of light. It consumes up to 80% less energy and it has at least 10 times longer life according to conventional light fixtures. So in the future all lighting fixture may be use LED as an illumination.



3.10-Railway Systems

We design and produce mechanical parts for on-board and way-side installation of signalization systems on railways and metro lines. Also we have an experience on cabling and installation of on-board equipments in trains.

Our teams have an experience on installation and maintenance of all electrical&mechanical equipments and systems which are used in railways. Specially we are working on medium and low voltage distribution lines, catenary lines and transformers, UPS systems, Fiber and copper data transmission lines, GSM base stations, ventilation and air-conditioner systems of trains,



4-CONTACT INFORMATION

ON ELECTRONICS INDUSTRY AND TRADE COMPANY LIMITED

Office Address 290. Sokak 33/A Kırkkonaklar Çankaya
06610 ANKARA TÜRKİYE

Tel +90-312-495 65 00
Fax +90-312-495 79 70

Production Addr 1436. Sokak No:10 İVOGSAN
Yenimahalle ANKARA TÜRKİYE

Tel +90-312-395 65 00
Fax +90-312-394 79 70

Contact Persons Orhan AYDIN – General Manager
Electrical&Electronic Engineer & Management
orhan@onelektronik.com

Erol AYDIN – Vise Manager
Mechanical Engineer, Msc
erol@onelektronik.com

Erdal AYDIN – Business Development Manager
Graduated from Business Management Faculty
erdal@onelektronik.com

e-mail on@onelektronik.com
url www.onelektronik.com

Established in 1991

VAT No 6420020699, Cumhuriyet Tax Office, ANKARA

Company Registry No 84754

ATO (Ankara Chamber of Commerce) Registry No. 60/371

ASO (Ankara Chamber of Industry) Member No 4024-21/92



5-QUALITY POLICY

As On Electronics,

We are aware of the fact that happiness and prosperity of our people can be only achieved by means of manufacturing and selling value-added products in international and domestic markets. **We aim**

- ✓ **Not to compromise from customer satisfaction**, for this is very important to become a market leader,
- ✓ to Utilize and also develop high technology ,
- ✓ to Produce user and environmental friendly, reliable, functional, trouble-free products, compliant with relevant standards and regulations,
- ✓ to Create an work environment for our staff where they can be proud of being a member of **On Electronics**, where they can have the enthusiasm for learning new things, for we believe that quality can be achieved through a team work dedicated to perfectionism,
- ✓ to Maintain **continuous improvement** in what we produce and who we employ. Because we believe that perfectionism can only be achieved through improvement and development.



6-SISTER COMPANIES and SUPPLIERS

Principally, instead of doing all manufacturing processes in our facility, we prefer to work with professionals in some subjects specially needs expertness. Below you can find some of these expert companies in their field.

1-TELMEK Telekomünikasyon Mekanik Sanayi ve Ticaret A.Ş.

Address : Ostim Org. San. Böl. Abdulgadir Geylani Caddesi No:24/A ANKARA
Tel : +90-312-587 87 98
Subject : Rack Cabinets, Manufacturing of Metal Enclosure in CNC machines
Rel. Pers. : Faruk SARAÇ
url : www.telmek.com

2-BİRİKİM Elektronik Sanayi ve Ticaret Ltd. Şti.

Address : Alinteri Bulvarı Gül86 Sitesi No:92 OSTİM Yenimahalle ANKARA
Tel : +90-312 354 3723
Subject : Electronic Components Supplier
Rel. Pers : Recep Aktan HOKKAÖMEROĞLU
url : www.birikimelk.com

3-PANO-SET Elektrik Sanayi ve Ticaret Ltd. Şti.

Adres : 21.Cadde No:14 İVOGSAN Yenimahalle ANKARA
Tel : +90-312-395 00 49
Subject : Manufacturing of Metal Enclosure in CNC machines
Rel.Pers. : Ali YİĞİT
url : www.pano-set.com

4-Eksen İmalat İnşaat Ltd.Şti.

Address : 1214.Sokak 23-25 Ostim Yenimahalle ANKARA
Tel : +90-312-385 78 73
Subject : Every kind of metal construction and GFRP (Glass Fibre Reinforced Plastic) production
Rel.Pers. : Rıza Tefvik HACISALİHOĞLU
url : www.eksenimalat.com

5-WERAP Ankara Elektronik ve Ticaret A.Ş.

Address : İstanbul Yolu Erciyes Sitesi 9. Cadde No:30 Yenimahalle ANKARA
Tel : +90-312 397 56 68
Subject : PCBA (Printed Circuit Board Assembly)
Rel.Pers. : Kamuran BUÇUKOĞLU

6-LETRA Elektronik ve Yazılım Sanayi Ticaret Ltd. Şti.

Address : ODTÜ Teknokent Galyum Blok ODTÜ ANKARA
Tel : +90-312-210 16 03
Subject : Electronic System Design, Embedded Microprocessor Software etc.
Rel.Pers. : Ohan TEMÜRCÜ
url : www.lettra.com.tr

7-TİTAN Building Systems Inc.

Address : Piyade Sok 18 Cankaya-Ankara 06550
Tel : +90-312-440 79 66
Subject : Public Adress Systems, Fire Safety, Master Clocks, FIDS etc.
Rel.Pers. : Bülent AKINCI
url : www.titanbt.com

8-AVRASYA Project Management Inc.

Address : Turan Güneş Bulvarı 42/6 Cankaya-Ankara 06550
Tel : +90-312-440 20 07
Subject : Project Management
Rel.Pers. : Mustafa HASGÜL
url : www.avrasyaprojeyonetimi.com

9-T&M Test ve Mühendislik A.Ş.

Address : 398.Sok 2/2 Birlik Mah. Cankaya-Ankara 06610
Tel : +90-312-496 16 00
Subject : Test Equipments, Network Time Server, Electronic Components etc.
Rel.Pers. : Aşkın KOÇAK
url : www.t-m.com.tr

10-Solariks Yazılım

Address : İnış Sok 18/13 Mamak-Ankara
Tel : +90-312-363 92 07
Subject : Embedded Software Development
Rel.Pers. : Hüseyin DEMİRCİ

11-SERTOM Yazılım

Address : Gersan 2306.Sokak No:61 Yenimahalle-Ankara
Tel : +90-312-475 39 83
Subject : Software Design and Development
Rel. Pers. : Serhat AKTUNA
url : www.sertom.com.tr

12-Segment Bilişim

Address : Şölen Sokak 6/1 Çankaya / ANKARA
Tel : +90-312-473 60 93
Subject : Electronic System Design
Rel. Pers. : Emre İLERİSOY
url : www.segmentbilisim.com.tr

13-Birde Makina

Address : Başkent Bulv. Asyamaç Sit. 204/29 Batıkent - ANKARA
Tel : +90-312-395 94 95
Subject : Site Installation & Services Works
Rel. Pers. : İsmail BAHADIR
url : www.birde.com.tr

13-Nanobiz

Address : ODTÜ Teknokent Galyum Blok Kat:2 No:18 06800 ANKARA
Tel : +90-312-444 62 66
Subject : R&D on Electronic Systems
Rel. Pers. : Hüseyin Avni ÖKTEM
url : www.nanobiz.com.tr

7-REFERENCES

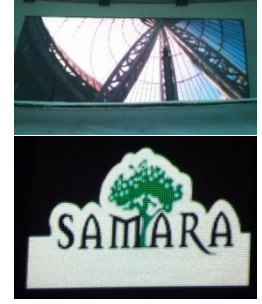
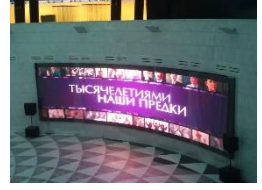
7.1-Scorboards

- **Adana** ; Kurttepe Industry, Çukurova Electricity Industry High School 3 pie.
- **Adıyaman** ; Adıyaman High School
- **Aksaray** ; Ministry of Education City Office
- **Ankara** ; ODTÜ Sports Halls (2 pieces)
- **Ankara** ; Hacettepe University Central & Beytepe Campus Sports Halls (2 pieces)
- **Ankara** ; Ankara University Sports Halls (2 pieces)
- **Ankara** ; TAI Ankara (3 pieces)
- **Ankara** ; Cumhurbaşkanlığı Muhafız Alayı Sports Hall
- **Ankara** ; War Academy Sports Hall (3 pie.)
- **Aydın** ; Söke High School
- **Balıkesir** ; Central and Gömeç Sports Halls (2 Pieces)
- **Bolu** ; Ardem A.Ş. Sports Hall
- **Bolu** ; İzzet Baysal University Central Campus Sports Hall
- **Bilecik** ; Bozüyük Sports Hall and Ministry of Education City Office (2 pieces)
- **Bursa** ; Ministry of Education City Office (3 pieces)
- **Bursa** ; Atatürk, Mustafakemalpaşa, İnegöl Sports Halls (3 pieces)
- **Bursa** ; MAKO A.Ş. Sporting Club
- **Çanakkale** ; Santral İnşaat and Ministry of Education City Office (2 pieces)
- **Çankırı** ; Central and Çerkeş Nevzat Ayaz Sport Halls (2 pieces)
- **Çorum** ; Atatürk High School and Eti Secondary School
- **Denizli** ; Ministry of Education City Office SHÇEK Sports Hall
- **Edirne** ; Trakya University Sports Hall
- **Elazığ** ; Merkez Anadolu Trade High School
- **Ereğli** ; Santral İnşaat- Ereğli Sports Hall
- **Erzincan** ; Atatürk High School
- **Giresun** ; Sports Hall
- **Gümüşhane** ; Ministry of Education City Office (2 pie.)
- **Hatay** ; Reyhanlı Sports Hall Scorbord and Announcement System
- **Isparta** ; Süleyman Demirel University Sports Hall
- **İskenderun** ; Demir Çelik Fabrikaları Sports Hall
- **İstanbul** ; İMKB Social Facilities
- **İstanbul** ; Yıldız Technical University Davutpaşa Campus Sports Hall
- **İzmir** ; Atatürk Sports Hall, Maltepe Military High School (2 pieces)
- **İzmit** ; BRİSA- İzmit Sports Hall
- **İzmir** ; Güneş Sporting Club

- **Kahramanmaraş** ; Çukurova, Anadolu Textile High Schools (2 pieces)
- **Kahramanmaraş** ; Elbistan Sports Hall
- **Kars** ; Sporting Hall
- **Kars** ; Merkez Secondary School
- **Kayseri** ; Erciyes University Sports Hall
- **Kırklareli** ; Merkez Secondary School
- **Kütahya** ; Sporting Hall
- **Malatya** ; İnönü University Sports Hall
- **Mersin** ; Silifke Sports Hall
- **Muğla** ; Central, Fethiye, Köyceğiz Sports Halls (3 pieces)
- **Muğla** ; Muğla University, Bodrum & Trade High Schools Sports Halls (3 pieces)
- **Niğde** ; Beş Şubat Primary School
- **Rize** ; Merkez Secondary School
- **Sakarya** ; Ministry of Education City Office
- **Sakarya** ; Central, Hendek, Rüstemler, Pamukova Sports Halls (5 pieces)
- **Samsun** ; Anadolu High School
- **Samsun** ; Atakum Anadolu Technical High School
- **Sinop** ; Ministry of Education City Office (2 pieces)
- **Sivas** ; Sports Hall
- **Tekirdağ** ; Anadolu High School, Tekirdağ Collage, Çorlu Sports Halls, (3 pieces)
- **Tokat** ; Zile Sports Hall
- **Trabzon** ; Central, Sürmene, Tonya Sports Halls (3 pieces)
- **Uşak** ; Anadolu High School
- **Van** ; Merkez Secondary School
- **Yozgat** ; Sports Hall
- **Erzurum** ; Wrestling Scorbord
- **İstanbul** ; İMKB Tennis Scorbord
- **İstanbul** ; Pamukspor Tennis Scorbord
- **Ankara** ; Bahçeli Miniature Football Scorbord System
- **Ankara** ; ODTÜ Waterpolo Scorbord System
- **İstanbul** ; Sea War School Pentatlon Scorbord System
- **Ankara** ; Cumhurbaşkanlığı Muhafız Alayı Olympic Swimming Scorbord System
- **Rusya-Moskova**-Sports Hall
- **Azerbaycan** - Bakü War School
- **KKTC** – Girne Sports Hall

7.2-Ledboard Systems

- **Çankaya Belediyesi – Ankara – TURKEY) – 2016**
Outdoor LED Video Screens
- **Kazakhstan Astana Library (DEC-Sembol) – 2014**
Indoor LED Video Screens
i-37,75 m² 3072 x 768 Pixel Full Color Video Board
ii-65,54 m² 2560 x 1024 Pixel Full Color Video Board
- **SAMSUN Samara Restaurant (Salida-Vodafone) – 2012**
GSM Tower Video Board
i-3,15 m² 192 x 96 Pixel Full Color Video Board
- **ANKARA ARENA SPORT HALL (Corvus-Deltoid) – 2010**
VIDEO CUBE and Banner Type Information Board
i-24 m² 288 x 192 Pixel Full Color Video Board
ii-20 m² 480 x 384 Pixel Full Color Video Board 4 pieces
iii-240 m 64 x 96 Pixel Full Color Banner Type Video Board
- **AVRASYA METRO GROUP (AMG) – 2009**
KADIKÖY-KARTAL METRO PROJECT Information System
i-5 m² 128 x 96 pixel Full Color Video Board
ii-1 m² 24 x 32 pixel Full Color information board 24 pieces
- **ERZURUM ATATÜRK UNIVERSITY –2007**
LED Videoboard Screen
i-7,4 m² 128 x 144 pixel Full color videoboard
ii-5 m² 128 x 96 pixel Full color videoboard
iii-1x1m Double color Variable Traffic Signs 5 pieces
iv-1x3m Digital Clock and Temperature Display 2 pieces
- **AKÇANSA CEMENT FACTORY–2006**
LED Screen
i-10 m² 192 x 72 Pixel monocolour graphical screen
- **TÜRKMENİSTAN – MENSEL JV 2000**
Aşkabat Olympic Stadium Scorbord System
i-15 m² 128 x 96 Piksel Full Color Video Board
ii-22 m² 128 x 176 Piksel Red 16 color level Video Board



- iii-0.5*6 m Red Moving Message Displays
- iv-Central Clock System

- **TÜRKMENİSTAN – MENSEL JV 1997**

Aşkabat Kopetdag Stadium Scorbord System
28 m² ,128 x 56 Piksel Red 16 Color Level Video Board



- **YAKUTİSTAN – SUMMA A.Ş. 1996**

Yakutsk Stadium Scorbord System
16 m² ,128 x 32 Points Red 16 Color Level Video Board



- **Ankara ; ODTÜ Congress&Culture Centre Red Message Board**
(1 m²) (128 x 80)

- **Ankara ; National Library Red Message Board** (1 m²) (128 x 80)

- **Ankara ; National Library, Massege Board** (128 x 16)

- **İzmir ; İzmir Türk High School Message Board** (7 m²) (128 x 80)

- **Sivas ; Cumhuriyet University Message Board** (1 m²) (128 x 80)

- **Ankara ; İbn-i Sina Hospital Message Board** (1 m²) (128 x 80)

- **Ankara ; Jandarma Hospital Message Board** (1 m²) (128 x 80)

- **İstanbul ; AKÇANSA Cement Factory Message Board** (192 x 72 pixel) (8,64m²)



7.3- Moving Message Signs

- **Ankara ; Maksim Gazinosu** (128 x 8) (3 mt)
- **Kırgızistan ; Summa A.Ş.** (96 x 8) (1 mt)
- **Ankara ; ETT Elektron Telekom** (128 x 8) (3 mt)
- **Ankara ; War Accademy** (96 x 8) (6mt)
- **Ankara ; Jandarma Hospital** (6 pie.)



7.4-Clock and Temperature Displaying Systems

- **Ankara ; Ankara Metro Central Clock System (ALARKO)**
(23 Station)
- **Ankara ; Prime Ministry Central Clock System (PRONET)**
(35 clock)
- **Ankara ; AŞTİ Ankara Intercity Bus Terminal Central Clock System**
(24 clock)



- **Kilis** ; Kilis Municipality
- **Ankara** ; Ministry of Defence (5 pie.)
- **İstanbul** ; Vezirspor Miniature Football Facilities (2 pie.)
- **Antalya** ; T.C. Roads Administration (2 pie.)
- **İstanbul** ; Harbiye Orduevi
- **Ankara** ; Tümer Engineering
- **Antalya** ; Teknik Tesisat
- **Ankara** ; Nallıhan Municipality
- **Ankara** ; Mali Müşavirler ve Muhasebeciler Derneği
- **Ankara** ; Jandarma Hospital (12 pie.)
- **Ankara** ; METU Campus (5 pie.)
- **Ankara** ; AŞTİ Bus Terminal
- **Ankara** ; Ata Bilge City (4 Sides)



7.5-Numeric, alphanumeric and graphic Display Systems

- **Ankara** ; TBMM General Meeting Hall Speaker Chair's Time Information Systems
- **İstanbul** ; Water Pump Station (PTD Ltd.Şti.)

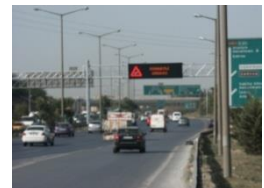
7.6-Industrial Information and Display Systems

- **Kocaeli** ; Mega General Industry Engineering Services and Industrial Products Trading. Co.
- **İstanbul** ; Aksigorta Fire and Earthquake Training Center-İstanbul Earthquake Platform Control and Simulation Software, 110 Fire Informing System Simulation
- **İstanbul** ; Beko-Television Factory Manufacturing Line Information Boards (15 pie.)



7.7-Traffic Signal Systems

- **Ankara** ; TANDEM Traffic Traffic Signal Heads 2009-2012
- **Ankara** ; ASELSAN Toll Collection Lane Signs 2009-2012
- **İstanbul** ; TEM Highway Intelligent Traffic Systems (ASELSAN) 2007
11,52 m2 Dual Color Variable Message Signs 4 pieces
- **Ankara** ; ASELSAN LED Flasher (2007)
- **Ankara** ; İncek Road Signalization Project 28 Cross (2006)
- **Ankara** ; ULTRA Ltd.Şti.
- **Ankara** ; Ankara Büyükşehir Municipality, Traffic Down Counter System(225 pie.)
- **Kırıkkale** ; Kırıkkale Municipality, Traffic Down Counter System (18 pie.)
- **İstanbul** ; İstanbul Büyükşehir Municipality, Traffic Down Counter System (40 pie.)
- **Ankara** ; ODİSAN Ortadoğu Sinyal Limited company.



Central Office: 290. Sokak 33/A Kırkkonaklar Çankaya 06610 ANKARA TURKEY
Tel: +90-312 495 6500 Fax: +90-312 495 7970

Manufacturing Facility: 1436.Sokak No:10 İVOGSAN Yenimahalle ANKARA TURKEY
Tel: +90-312 395 6500 Fax: +90-312 394 79 70

www.onelektronik.com

- **Ankara ; SİNTEK Ltd.Şti.**
- **Ankara ; TKS Ltd.Şti.**
- **Çerkezköy Municipality**
- **Karayolları 15. Bölge Müdürlüğü; Karabük Gima Crossroads**
- **Karayolları 15. Bölge Müdürlüğü; Karabük Yeşilmahalle Crossroads**
- **Karayolları 15. Bölge Müdürlüğü; Kastamonu Alatarla Crossroads**

7.8-Passenger Information Display Systems

- **Ankara Metro PIDS - 2014**
 - 96 pieces 32x192 pixel, monocolor, double sided PIDS LED Boards
 - Interface between signalization system and PIS
- **Ankara-Konya High Speed Train PIDS - 2013**
 - 10 pieces 32x192 pixel, monocolor, double sided PIDS LED Boards
 - 2 pieces 224x192 pixel, monocolor, PIDS LED Boards
 - 4 pieces 42" LCD Monitor
 - Central Control System and Database software
- **Samsun Light Metro Project 2011 PIDS LED Boards**
 - 42 pie 16 x 128 pixel Mono Color LED Board
- **Sabiha Gökçen International Airport 2007 FIDS Revision**
 - 2 pie 13,5 m² 520 x 448 pixel Multi Color Videoboard Departure Boards
 - 2 pie. 11,5 m² 440 x 448 pixel Multi Color Videoboard Arrival Boards
- **Kazakhstan Astana Airport PIDS Systems (2004)**
 - 2 pieces 4 m² 288 x 144 pixel MultiColour Video Board Departures Information Boards 1 ve 2
 - 2 pieces 3 m² 224 x 144 Nokta MultiColour Video Bord Arrivals Information Boards 3 ve 4
- **Ankara ; AŞTİ Ankara Intercity Terminal 2001-2002**
Information Register and Movement Planning Systems and All Systems Automation
 - 1 piece 15 m² 544 x 416 Dot Multi Color Video Board
 - 2 pieces 15 m² 448 x 416 Dot Multi Color Video Board
 - 1 piece 13 m² 448 x 416 Dot Multi Color Video Board
 - 2 pieces 13 m² 448 x 368 Dot Multi Color Video Board
 - 1 piece 10 m² 576 x 208 Dot Multi Color Video Board



- 10 pieces 32" 9:16 CRT Monitor
- 111 pieces Platform Perceive Automation (empty/full)
- 1 piece Information Inquiring Software
- 1 piece Platform Entrance and Invoice Automation
- 1 piece Choosing Platform and Register of Coming Bus Software
- 1 piece Car Park Automation
- 1 piece Inquiry software from World Wide Web



7.9- Industrial Lighting and Electricity Power Line

- **TPAO Turkish Petrol Power Line Construction Project (2011)**
 - Underground Power distribution line (36kV) construction (2000 m)
 - Transformer and switching & distribution building construction (150 m²)
 - Installing of 36kV switching equipments
 - SCADA of controlling and monitoring of system
- **Karayolları 15.Division Tunnel Lighting Project (2010)**
 - Power distribution line, transformer post and lighting of 600 m long single tube tunnel
- **Antalya; Orsis, LED Pool Lighting Fixtures Full color**
- **İstanbul, Siteco Tunnel Luminaries,**
 - Manufacturing of special tunnel luminaries from 316Ti inox sheet metal.

7.10- Railway Application

- **Ankara Metro Line-M4 PIDS (2016) (Ongoing Project)**
 - 40 pieces 32x192 pixel, RG, double sided PIDS LED Boards
 - Interface between signalization system and PIS
- **Ankara Metro Line-M4 Central Clock System (2016) (Ongoing Project)**
 - 40 pieces 15" Double Sided IP Analog Clock
 - Interface between signalization system and PIS
- **İstanbul Ulaşım, Üsküdar – Ümraniye – Çekmeköy Metro Line (Doğuş A.Ş.) (2015) (Ongoing Project)**
 - 64 pieces 48x224 pixel, RG, double sided PIDS LED Board
 - 50 pieces 48x224 pixel, RG, single sided PIDS LED Board



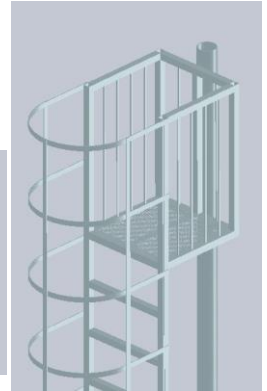
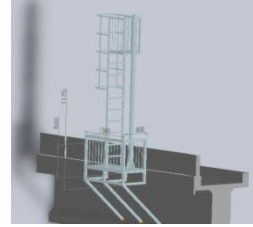
- İstanbul Ulaşım, Kartal – Kaynarca – Tavşantepe Metro Line Extension Project (ORGE Elektrik A.Ş.) (2015) (Ongoing Project)**
 - 18 pieces 32x224 pixel, RG, double sided PIDS LED Board
 - 8 pieces 32x224 pixel, RG, single sided PIDS LED Board
- Ethiopia; Awash – Kombolcha – Hara Gebaya Railway Passenger Information System (Iskratel d.o.o.) (2015)**
 - 10 pieces, 32x224 pixel, monocolor, double sided PIDS LED Board
 - 14 pieces, 40" LCD PIDS Monitor
 - 2 pieces, 30 cm, monocolor, Digital Wall Clock
- Irmak – Karabük – Zonguldak Railway Passenger Information System (Yapı Merkezi – IDIS) (2015)**
 - 10 pieces 32x224 pixel, monocolor, double sided PIDS LED Board
 - 14 pieces 40" LCD PIDS Monitor
 - Central Control System and Database software
- Ankara Metro On-Board Public Announcement (Alarko) (2014)**
 - PA system entegration of old Bombardier Cars with Ansaldo
 - Signalization System Interface (72 Car)
- Ankara Metro PIDS - 2014**
 - 96 pieces 32x192 pixel, monocolor, double sided PIDS LED Boards
 - Interface between signalization system and PIS
- Ankara Metro Central Clock System – 2014**
 - NTP Server, 23 Master Clocks and 100 pieces 15" Analog Slave Clock
 - Interface between signalization system and PIS
- Ankara-Konya High Speed Train PIDS – 2013**
 - 10 pieces 32x192 pixel, monocolor, double sided PIDS LED Boards
 - 2 pieces 224x192 pixel, monocolor, PIDS LED Boards
 - 4 pieces 42" LCD Monitor
 - Central Control System and Database software



- **Samsun LRT Project PIDS – 2011**
 - 42 pieces **16 x 128 pixel** Mono Color LED PID Boards
 - Signalization Interface Software, User Interface Software and Database Software



- **Ankara – Ankara Metro Electromechanical Works Project (Ansaldo Spa) (2012)**
 - Manufacturing of mechanical parts for way-side installation works (Eurobalise supports, cable supports etc.)
 - Manufacturing of basement for shunting signal and Signal Poles for high signals.
 - Design and manufacturing of signal poles for viaduct and ground level applications.



- **Adana – Mersin-Toprakkale Signalization Project (Ansaldo Spa) (2012) (on going)**
 - On-board Installation (24 Train)

